

SOLIDPLEX

Farben für Holzbeschichtung
Colours for wood coating

Laurentiusstr. 39
63897 Miltenberg
Tel.: +49 (0)9371 - 669 29 41
Fax: +49 (0)9371 - 669 29 46
E-Mail: kontakt@solidplex.de
Web: www.solidplex.de



gelb (ge) yellow
RAL 1023



orange (or) orange
RAL 2008



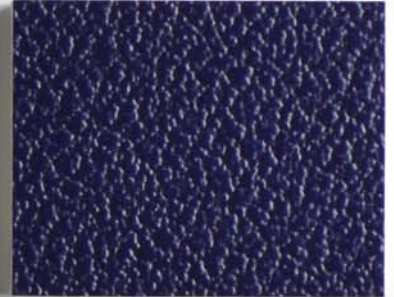
rot (rt) red
RAL 3020



bordeaux (bd) bordeaux
RAL 4004



blau (bl) blue
RAL 5010



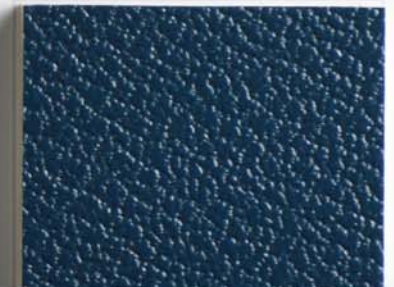
kobaltblau (kb) navy blue
RAL 5013



himmelblau (hb) sky blue
RAL 5015



türkis (tk) turquoise
RAL 5018



ozeanblau (ob) ocean blue
RAL 5020



nachtblau (nb) night blue
RAL 5022



olivgrün (ov) olive green
RAL 6003



schokobraun (br) chocolate brown
RAL 8017



minzgrün (gn) mint green
RAL 6029



weiss (ws) white
RAL 9010



Gegenzugfolie opposing film
staubgrau RAL 7037 dustygrey



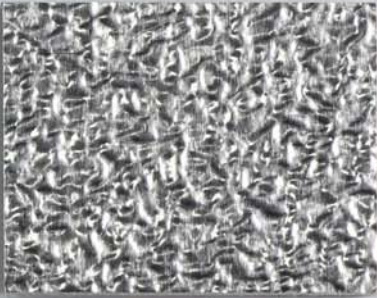
staubgrau (gr) dusty grey
RAL 7037



schiefergrau (sg) slate grey
RAL 7015



hellgrau (hg) light grey
RAL 7046



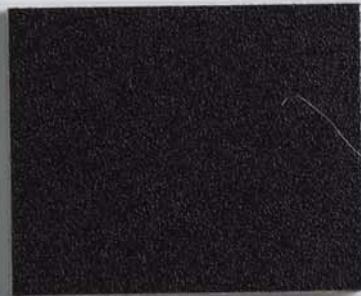
Alu Stucco stucco aluminium



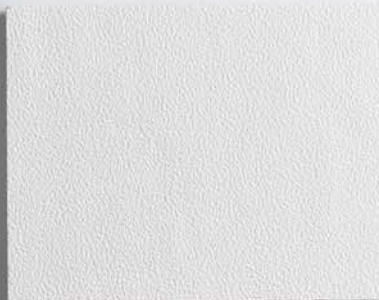
schwarz (sw) black
RAL 9004



silber (si) silver
RAL 9022



Gegenzugfolie opposing film
schwarz RAL 9004 black



Gegenzugfolie opposing film
weiss RAL 9010 white



Rohsperrholz raw plywood



Phenol schwarz Phenol black



Phenol braun Phenol brown



Kunststoff ABS plastics ABS



Lauan 4 mm (1220 mm x 2440 mm)



Pappel/ poplar 5 mm (1220 mm x 2440 mm)



Pappel/ poplar 6 mm (1220 mm x 2440 mm)



Birke/ birch 6,5 mm (1250 mm x 2500 mm)



Birke/ birch 9 mm (1250 mm x 2500 mm)



Birke/ birch 12 mm (1250 mm x 2500 mm)



Birke/ birch 15 mm (1250 mm x 2500 mm)



Birke/ birch 18 mm (1250 mm x 2500 mm)



Birke/ birch 21 mm (1250 mm x 2500 mm)